



www.haciendapiman.com



Piman
HACIENDA GARDEN HOTEL
ANDES . ECUADOR

Office Address: Julio Zaldumbide N25-42 y Valladolid . Quito – Ecuador
Phones: 00.593.2.256.6090, 00.593.2.250.9115, 00.593.2.250.9504
Fax: 00.593.2.223.6521, IBARRA . IMBABURA . info@haciendapiman.com

*tucked into an
oasis-like valley
between the folds
of dry mountains*



Welcome to Hacienda Piman, an historic retreat located in the northern Ecuadorian Andes. A place redolent with peace, a place where you'll enjoy comfortable rooms and social areas amid modern and traditional architecture, delicious home-cooking, peaceful gardens and the warmth of your hosts.

Tucked into an oasis-like valley between the folds of dry mountains, Hacienda Piman offers you the perfect base for both disconnecting from your daily life and exploring the rich cultural and natural heritage of one of Ecuador's most captivating regions.

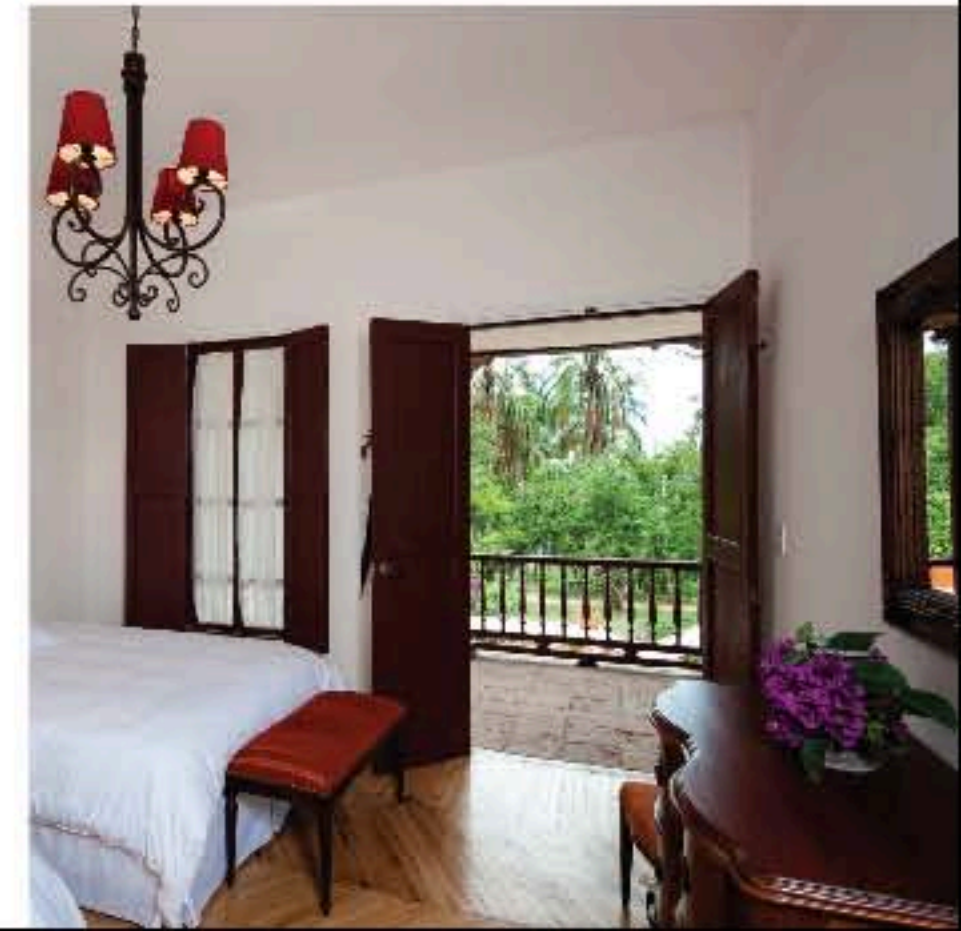
Hacienda Piman, where simple pleasures meet the finer things in life.



Rooms

The hacienda's rooms, like its overall architecture, are a marriage of the old and the new, of the traditional and the modern. Thick stone walls, exposed brick, antiques, paintings... all provide the characterful setting for your stay, but with the conveniences of modern life: hot water, telephones, safes, heating. It's simple yet homely, warm and friendly.

The 17 rooms are arrayed with seven in the main manor house and 10 distributed between five cottages, two rooms in each.



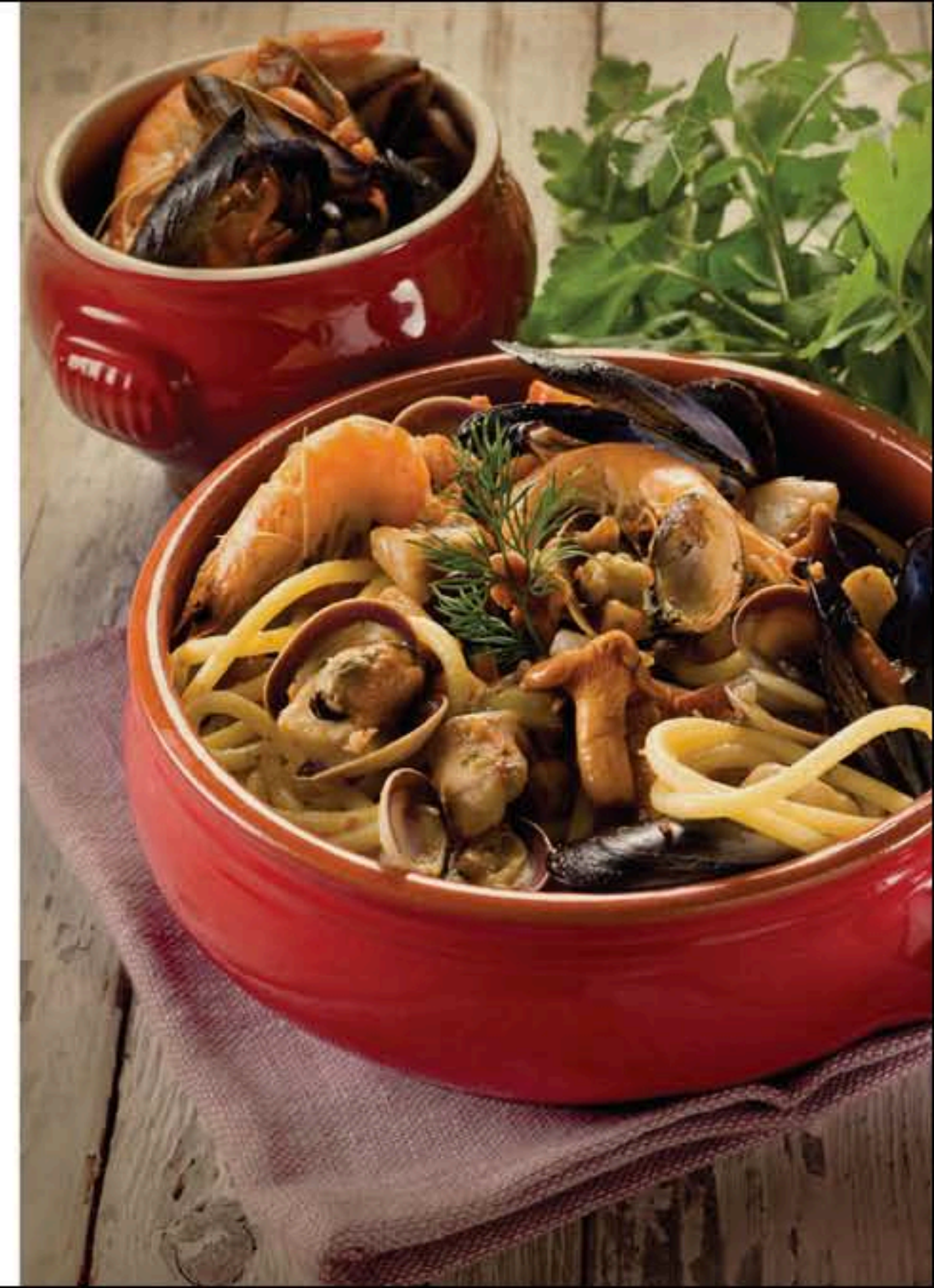


*from lush
green valleys and
towering volcanoes*

At Hacienda Piman, we're proud of the culinary heritage of the Ecuadorian Andes. We serve an array of home-style dishes, drawing on the country's staggering variety of ingredients.

Favourites include soups – dozens of them, with quinoa, with amaranth, with potato, with morocho corn, spinach, chard, broccoli... — as well as typical pork- or trout-based dishes from the Andes. Vegetarian options are, of course, available, and we'll be happy to share recipes and make you part of the hacienda's culinary experience if you like.

Did we mention fruit juices? One of the wonders of Ecuador is tasting the huge selection on offer, made from either temperate or tropical fruits, or even combining both!



Attractions

The closest town to the Hacienda is the capital of Imbabura Province, Ibarra, known as the White City for its white-washed colonial quarter. It's a handsome, old-fashioned town of white-walled colonial buildings and peaceful squares filled with flowering trees. The odd horse-drawn cart still clomps along cobbled streets. Its altitude of 2,210 m (7,366 ft) gives the city a refreshing, comfortable climate and its population of 150,000 creates enough activity without making it too busy.

From Ibarra, the restored railway line departs for the coast – a fun ride on the rails with an interesting community - tourism component. From lush green valleys and towering volcanoes, the train from Ibarra to Salinas takes its passengers through landscapes that are as diverse as

they are picturesque. The train, renovated to carry tourists to and from the Northern Andean villages of Ibarra and Salinas, is a popular weekend trip.

The 30 kilometre [18.5-mile] trip takes about two hours each way and promises to charm passengers with breathtaking scenery. The track stretches across valleys, passes over bridges and climbs mountains.

To the north, one of the country's most fascinating ecosystems extends over the

protected páramo El Ángel, a high - altitude forest of paper-bark trees and wild expanses of intriguing frailejón plants.

Nearby, the Afro-Ecuadorian communities of El Chota make for an unexpected cultural twist here in the Andes. These live mainly from agriculture (cotton, sugar cane, fruit for wines), retaining many African traditions such as the 'bomba' music and dance. A small museum can be visited and cultural encounters arranged.



*landscapes that are
as diverse as they
are picturesque*



Location

Hacienda Piman is situated 9 kilometres (5.5 miles) from the city of Ibarra, on the old Panamerican Highway Ibarra-Tulcan and about 14 km (under 9 miles) from the Afro - Ecuadorean valley of El Chota. It sits at 2,100 m (6,561 ft) above - sea - level, with very little rain. The climate is excellent, ranging from a lowest day-time temperature of 14°C to a maximum of 30°C (57°F to 86°F) year-round.



HACIENDA PIMAN
A 9 Km de la Aduana de Yahuarcocha por la antigua
Panamericana Norte. IBARRA - TULCAN.
Telf. 06.304.6852/53/54.

Quito: 256.6090
250.9504
250.9115

info@haciendapiman.com

